

# MONTHLY MEMBERSHIP PROGRESS REPORT

District 322 B1

Results as of: 6/30/2024

GMT:

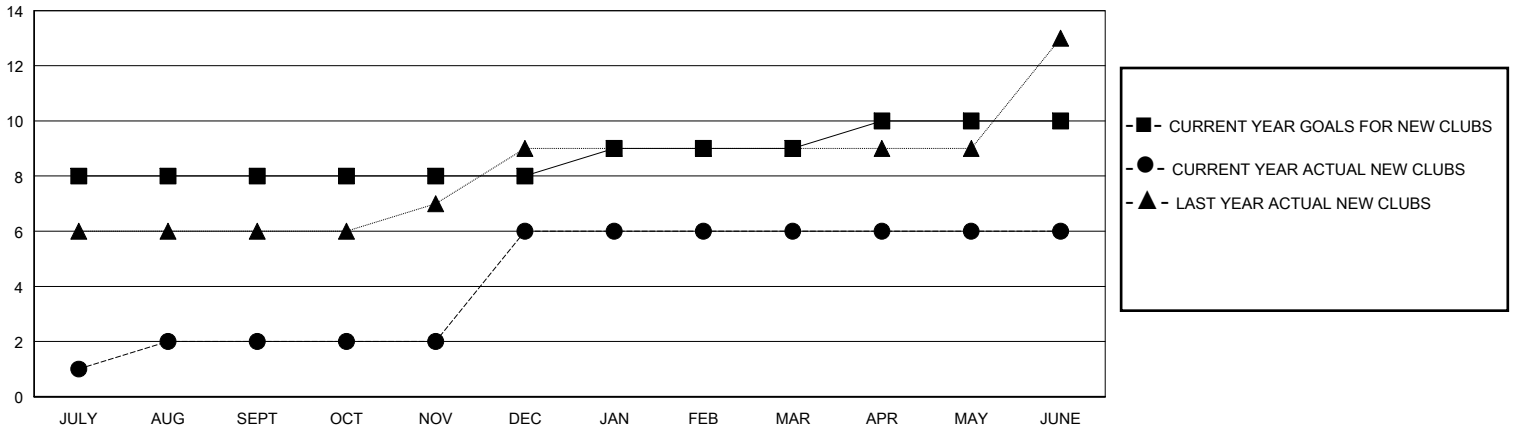
LOCATION INDIA

GMT CA

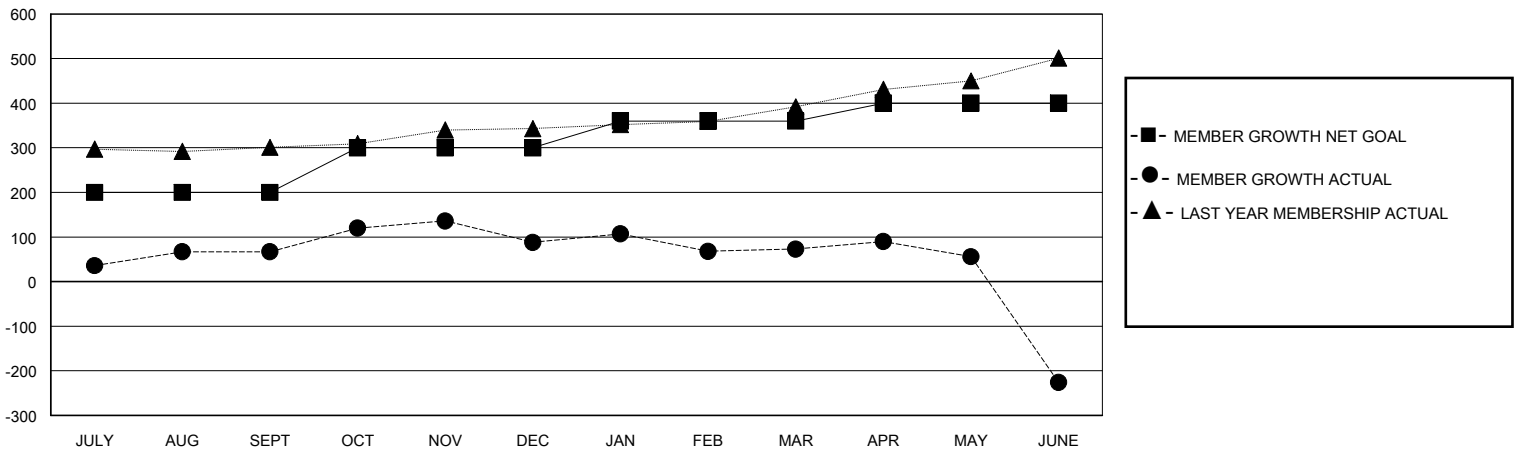
Clubs			
RESULTS FOR 2023-2024			
QUARTER	NEW CLUB GOAL	NEW CLUBS	DROPPED CLUBS
JULY/AUG/SEPT	8	2	2
OCT/NOV/DEC	0	4	4
JAN/FEB/MAR	1	0	1
APR/MAY/JUNE	1	0	2

Members			
RESULTS FOR 2023-2024			
QUARTER	MEMBER GROWTH NET GOAL	MEMBER GROWTH ACTUAL	DROPPED MEMBERS ACTUAL (including transfers)
JULY/AUG/SEPT	200	230	151
OCT/NOV/DEC	100	295	270
JAN/FEB/MAR	60	68	64
APR/MAY/JUNE	40	358	475

GOALS AND ACTUAL NEW CLUBS CUMULATIVE



GOALS AND ACTUAL MEMBERS CUMULATIVE



DROPPED CLUBS: 9	70 CLUBS OF 93 ADDED 1 OR MORE NEW MEMBERS	<b>GENDER DISTRIBUTION</b>
		MALE 2,389 (64.07%)
		FEMALE 1,340 (35.93%)
<b>DROPPED MEMBERS</b>	<a href="#">CLICK HERE FOR CUMULATIVE MEMBERSHIP DATA</a>	TOTAL FAMILY UNIT MEMBERS 1,697
DECEASED 19		FAMILY MEMBERS PAYING HALF DUES 985
CLUB CANCELLED 85		
OTHER 856		
<b>TOTAL 960</b>		